

Harare



BLISS XRTTM
BROAD LOOM CARPETS
Re'birth your's floor

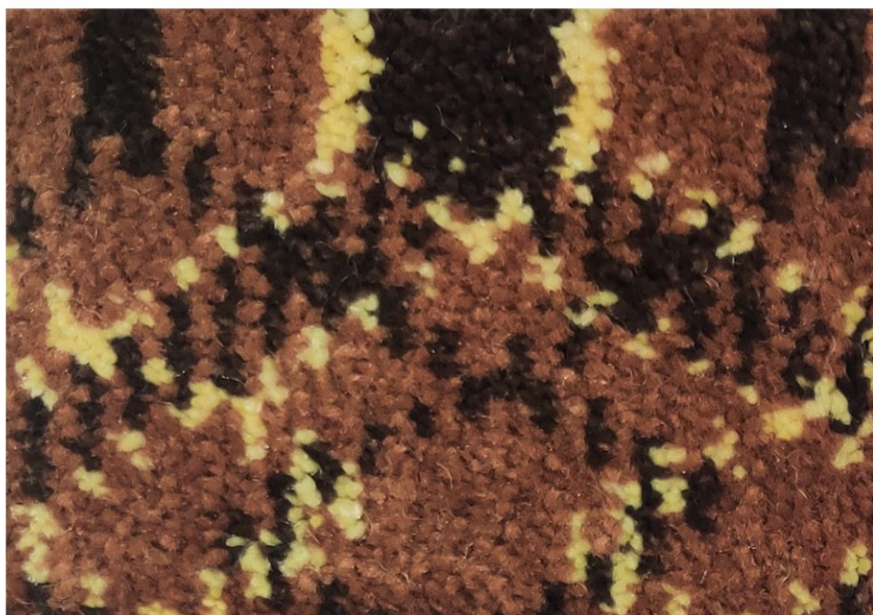
Harare

Wall to Wall Carpet





1095 SARCOLINE



1045 MAHOGANY



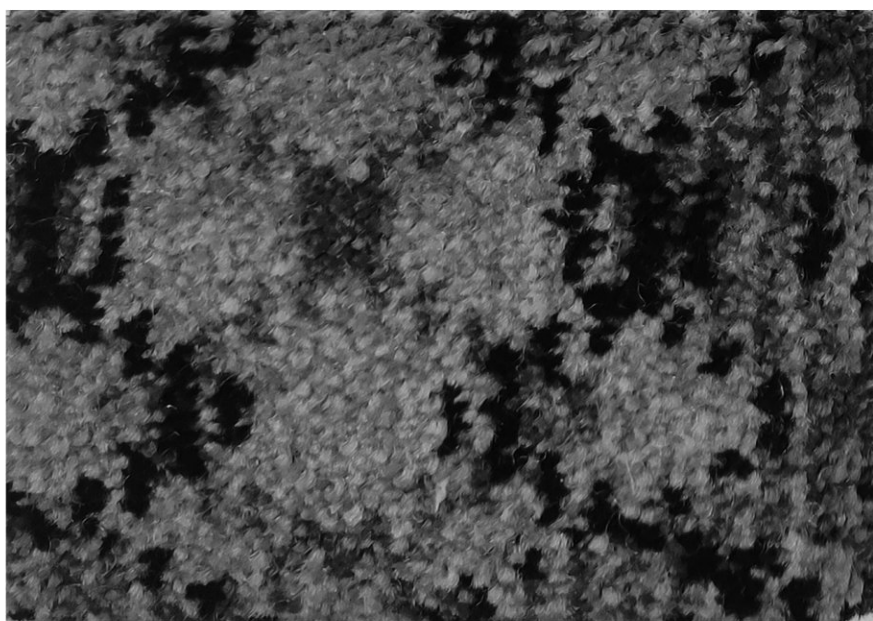
1028 BURGUNDY



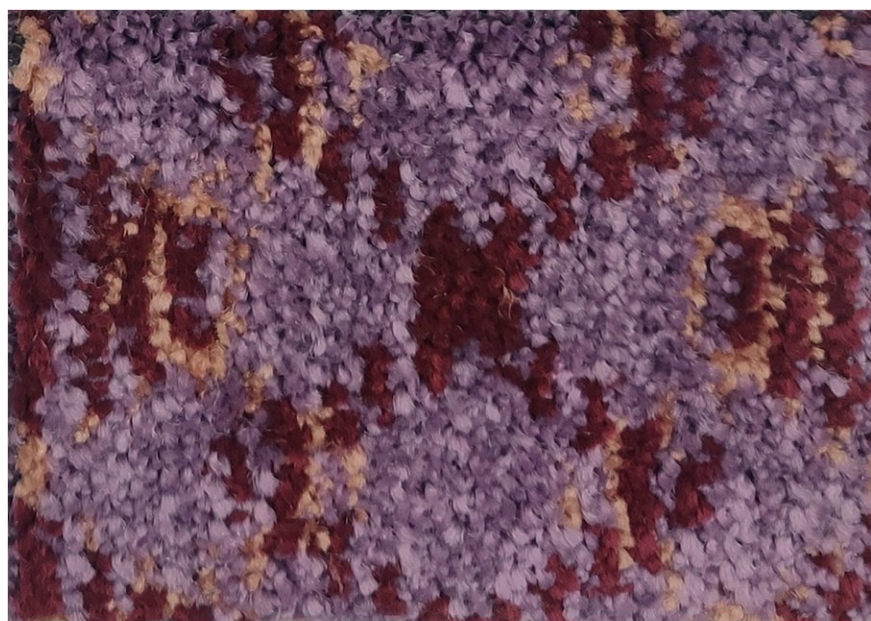
1085 CANDY



1096 GRANOLA



1076 GRANITE



1086 MULBERRY

Harare

Wall to Wall Carpet

Technical Specifications

Construction	Cut Pile Graphic
Pile fiber composition	100% Olefin
Dye method	Solution Dyed
Pile weight	1000 g/m ²
Total weight	1900 g/m ²
Number of tufts	126000/m ²
Tufting gauge	1/8"
Primary backing	Woven
Secondary backing	Action Fleece
Carpet width	3.66 m
Pile height	7.00 mm
Total height	9.00 mm